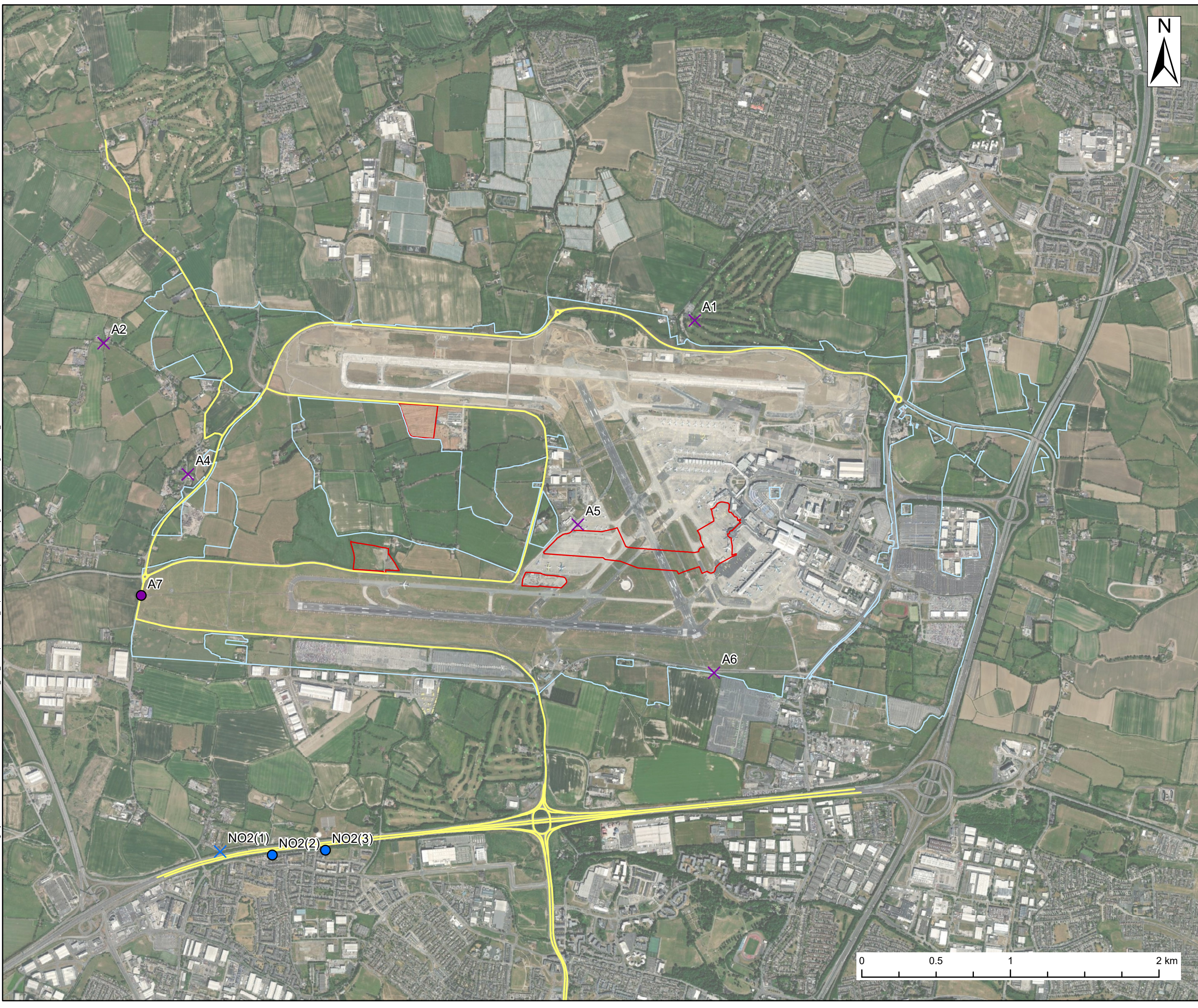




- LEGEND**
- Application Site Boundary
 - Land owned by daa
 - Modelled Road Receptor
 - AECOM Diffusion Tubes, used
 - × AECOM Diffusion Tubes, not used
 - × daa Diffusion Tubes, not used
 - daa Diffusion Tubes, used



Notes:
 Service Layer Credits: Source: Esri, Maxar, Earthstar Geographics, and the GIS User Community

AECOM Internal Project No:
 60601864

Drawing Title:
 MONITORING LOCATIONS
 USED IN MODEL VERIFICATION

Scale at A3: 1:24,000

Drawing No:
 FIGURE 8.1

Drawn: Chk'd: App'd: Date:
 BS TD CB 08/08/22

Filename: \\na.aecomnet.com\fs\EMEA\Dublin\IEDBL2\Legacy\DU-MAN-002\data\CdDublin-jobs\GIS\60601864_daa_Underpass\GIS\02_Maps\EIAR\Chapter 8 Air Quality\Figure 8.1 Monitoring Locations_20220806.mxd

This drawing has been prepared for the use of AECOM's client. It may not be used, modified, reproduced or relied upon by third parties, without the prior written consent of AECOM. AECOM accepts no responsibility, and denies any liability whatsoever, to any party that uses or relies on this drawing without AECOM's express written consent. All measurements must be obtained from the stated dimensions.